

15 on Orange. A spectacular urban oasis.

A showstopper with distinctive design.

The Capital 15 On Orange Hotel is set within Cape Town's richly historical Company's Garden and is anchored by Table Mountain and Lion's Head. Stroll down to vibrant **Kloof Street**, a culinary destination full of trendy cafes, stunning restaurants and cocktail bars. Next door is the Planetarium and the V&A Waterfront is a mere 3 kms away.

Combining distinctive architecture and exquisite luxury, you know you have arrived somewhere unique the moment you step into reception.



THE CAPITAL
15 ON ORANGE

Location

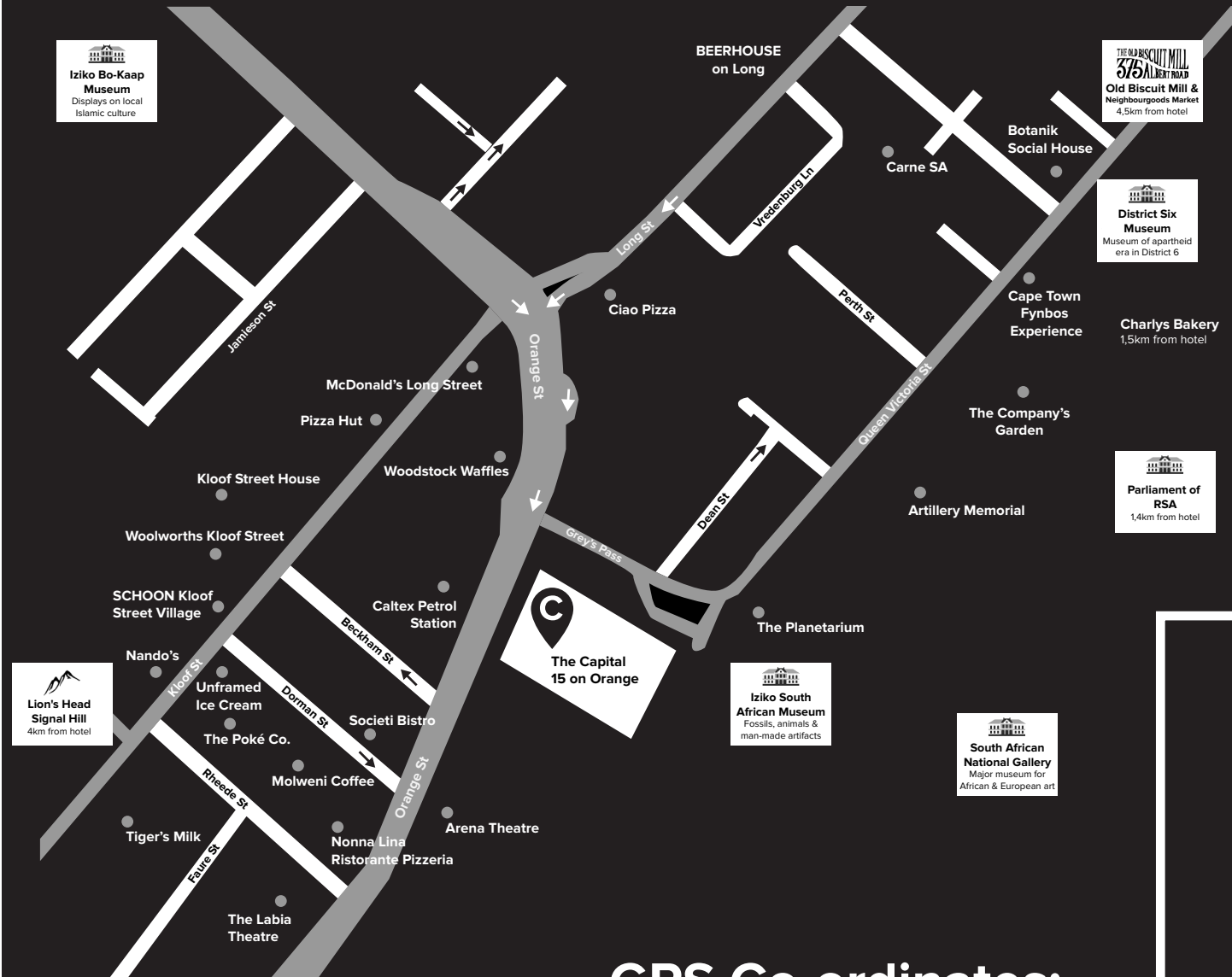
Corner of Grey's Pass and Orange Street,
Cape Town 8000, Western Cape,
South Africa

Local attractions

- Table Mountain
- Lions Head
- V & A Waterfront
- Kloof Street
- Company Gardens Museum
- Parliament
- The Planetarium
- Zeitz Mocaa
- St George's Cathedral
- St George's Mall

Contact details

Tel: +27 (0)21 469 8000
Email: 15onOrange@thecapital.co.za
Website: thecapital.co.za



GPS Co-ordinates:
-33.9279 / 18.4140



The Emerald Lounge Restaurant & Bar, The O bar and pool deck have views of the majestic Table Mountain and Signal Hill.

The hotel also features conference venues, a stunning spa and a gym.

15 on Orange rooms and apartments

With 129 accentuated rooms, suites and apartments set to the highest standards, your world just got bigger. Throughout each of the exquisitely appointed spacious rooms, a breathtaking fusion of cosmopolitan comfort and natural splendour is offered at every turn.

All rooms come with exquisite furniture, a muted, contemporary aesthetic and mood lighting. Swoon worthy bathrooms feature oversized bathtubs and rain showers which are standard in all bathrooms.

Standard Rooms

24 x Standard rooms (40 m²). Urban sophistication with everything you need for a perfect night's rest. Step back and retreat to a world of calm. Features one king bed with percale linen, block out curtains, a luxurious bathtub and separate rain shower. Rooms include a 55 inch smart TV, free Wi-Fi, a tea/coffee making station and a mini bar.

Luxury Rooms

34 x Luxury rooms (50 m²). Contemporary luxury, a respite from the outside world and feels like you have just stepped into a jewel box of comfort. Rooms feature a king size bed with percale linen, lounge, block out curtains, luxurious bath with a rain shower, 55 inch smart TV, free Wi-Fi, safe, mini bar, tea/coffee station.





15 on Orange rooms and apartments

Executive Suite

18 x Executive Suites (60 m²). Our suites offer an elevated experience, plush interiors invite lazy mornings in bed. Rooms feature a king size bed with percale linen, lounge, block out curtains, luxurious bath with a rain shower, 55 inch smart TV, free Wi-Fi, safe, mini bar, tea/coffee bar station.

Executive Suite with Mountain view

27 x Executive Suite with Mountain view (65 m²). A retreat with abundant space and breathtaking views, best enjoyed with coffee or a cocktail in hand. Rooms feature a king size bed with percale linen, lounge, block out curtains, luxurious bath with a rain shower, 55 inch smart TV, free Wi-Fi, safe, mini bar, tea/coffee bath station.

Apartments

24 x One bedroom apartments (65 m²).

14 x Two bedroom apartment (120 m²).

Modern and luxurious, a true home away from experience; these **1 and 2 bedroom apartments** are kitted with quality appliances and finishes. Apartments feature a separate living room area, dining area; fully equipped kitchen with a fridge, stove, oven and washing machine and tumble dryer. Rooms feature a king size bed with percale linen, block curtains, luxurious bath with a rain shower, 55 inch smart TV and free Wi-Fi.





Signature Pods



Hendrick's Signature Pod

Elegant and beautiful, this delightfully curated experience draws inspiration from this deliciously premium and refreshing gin.



Hennessy Signature Pod

Explore the finest cognac that expresses the Hennessy's master blenders know-how since 1765, in the spirit of creativity and tradition.



Moët & Chandon Signature Pod

Stay iconic. Enjoy an unparalleled experience in a glamorous setting. Taking its design inspiration from a beverage that is earmarked for celebrations.



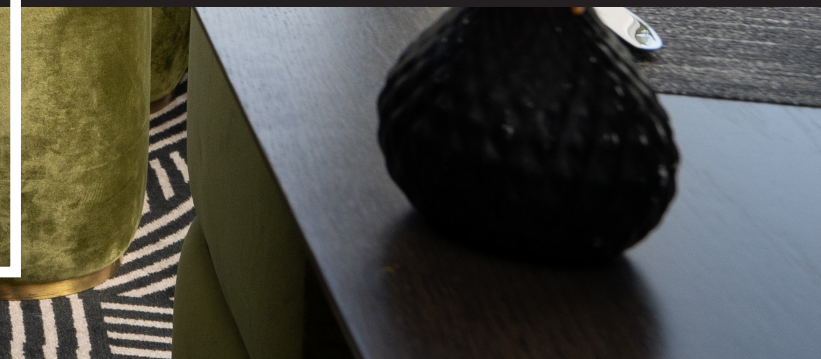
Glenmorangie Signature Pod

Bold and exciting, endlessly imaginative in their quest to create delicious whiskies, Glenmorangie sparked our design inspiration of this room.



15 on Orange Comforts

- The Emerald Lounge Restaurant & Bar
- The O Bar
- The Grotto Spa Bar
- Mangawanai Signature Spa
- Retail Centre
- Fitness Centre with modern equipment
- Pool and deck
- Private Dining room
- Modern class conferencing
- Complimentary Laundry in Apartments
- Complimentary high speed uncapped Wi-Fi
- 24-hour controlled security access ensuring guest safety & privacy
- Luxury guest amenities and robes
- Work desks
- Concierge and Travel Desk
- Full Back up Generator



Dining

Awaken your tastebuds with sumptuous local and international flavours.

Dine in style at the sophisticated Emerald Lounge Restaurant & Bar and experience our global menu in a tranquil and sophisticated setting.

Breakfast: 06:00am - 10:00am

Lunch 12:00pm - 03:00pm

Dinner: 06:30pm - 11:00pm

All day menu

24-hr in-room dining







THE GROTTO

WELLNESS SPA
THE CAPITAL 15 ON ORANGE

Mangwanani

Signature

SPA

Featuring relaxation sleep pods, WIM hydrotherapy spa pool, a Turkish bath, a sauna, a steam room, 8 treatment rooms for luxurious massages & facials, a Grotto Mani/Pedi lounge and introducing **The Grotto Spa Bar**.

Leave your clothes behind and come **enjoy the underground grotto**.

Located on lower ground level (LG) inside **Cape Town's only Mangwanani Signature Spa**.



Meetings and Conferences

Events that will inspire, complemented by stunning Cape Town views. A variety of well-equipped spaces ideal for meetings, events and weddings. From business conferences and vibrant fashion shows to grand galas and small cocktail parties, a place for every occasion. An experienced planning team to assist in advising and coordinating, and ensuring your event is ultimately successful.

Half and full day conference packages

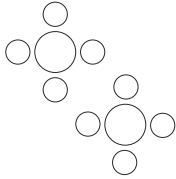
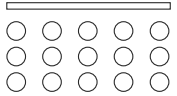
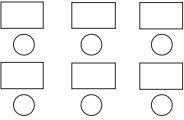
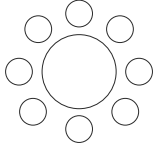
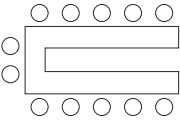
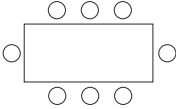
Half day packages are flexible, with a morning or afternoon refreshment break. This includes the hire of the venue, lunch, equipment, bottled water, and complimentary unlimited high speed Wi-Fi.

Full day packages include the hire of the venue, lunch, 3 coffee breaks, equipment, bottled water, and complimentary unlimited high speed Wi-Fi.

Secure parking is available at discounted rates.





SEATING CHART	 Cocktail Style	 Cinema Style	 Schoolroom Style	 Banquet Style	 U-shape Style	 Boardroom	VENUE HIRE RATES <small>*Subject to change</small>
Blue Diamond (133m ²)	200	180	80	80	40	40	Full Day: R20 000 Half Day: R10 000
Tanzanite (92m ²)	100	100	50	64	24	20	Full Day: R10 000 Half Day: R5 000
Amber (Private Dining Area)	40	40	20	50	20	12	Full Day: R7 000 Half Day: R3 500
Ruby (48m ²)	-	-	-	-	-	18	Full Day: R5 000 Half Day: R2 500
Quartz (26m ²)	-	-	-	-	-	10	Full Day: R3 000 Half Day: R1 500
Topaz (26m ²)	-	-	-	-	-	12	Full Day: R3 000 Half Day: R1 500

CONFERENCE PACKAGES

Full Day Conference Package (Non Residential)	R770 per person	Includes 3 tea/coffee breaks, lunch, conference venues hire, standard conference equipment, notepads, pens, bottled water and unlimited high speed complimentary Wi-Fi.
Full Day Conference Package (Residential)	R750 per person	Includes 3 tea/coffee breaks, lunch, conference venues hire, standard conference equipment, notepads, pens, bottled water and unlimited high speed complimentary Wi-Fi.
Half Day Conference Package (Including lunch)	R750 per person	Includes 2 tea/coffee breaks, lunch, conference venues hire, standard conference equipment, notepads, pens, bottled water and unlimited high speed complimentary Wi-Fi.
Half Day Conference Package (Excluding lunch)	R630 per person	Includes 3 tea/coffee breaks, conference venues hire, standard conference equipment, notepads, pens, bottled water and unlimited high speed complimentary Wi-Fi.
Full Day Conference Package (Weekend)	R730 per person	Includes 3 tea/coffee breaks, lunch, conference venues hire, standard conference equipment, notepads, pens, bottled water and unlimited high speed complimentary Wi-Fi.

Rates effective until 31 January 2024. Terms and Conditions Apply.





The Capital Hotels & Apartments across South Africa:

Sandton:

THE CAPITAL **EMPIRE**
THE CAPITAL **ON THE PARK**
SEVEN Villa Hotel & Spa

Cape Town:

THE CAPITAL **MIRAGE**
THE CAPITAL **15 ON ORANGE**

Rosebank:

THE CAPITAL **ON BATH**

Durban:

THE CAPITAL **PEARLS**
THE CAPITAL **ZIMBALI**

Melrose:

THE CAPITAL **MELROSE**

Mpumalanga:

THE CAPITAL **MBOMBELA**

Pretoria:

THE CAPITAL **MENLYN MAINE**
THE CAPITAL **TRILOGY**

Central Reservations

T: +27 (0)11 290 9700 | E: reservations@thecapital.co.za | thecapital.co.za



The Capital 15 on Orange looks forward to having you.
We hope you enjoy your stay.

If you have an queries please feel free to contact us,
or visit thecapital.co.za for more information.



THECAPITAL

Hotels | Apartments | Resorts

RIGHT, WHERE YOU NEED TO BE